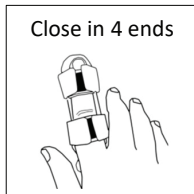
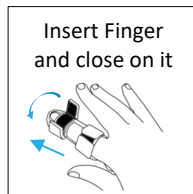
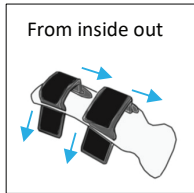
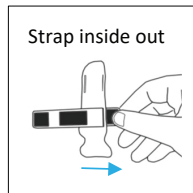
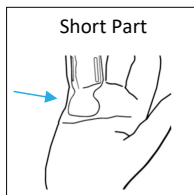
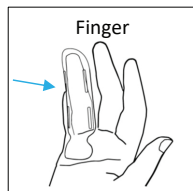


STEPS



FINGER SPLINT

HIGHLIGHTS AND INDICATIONS

Narrow Finger 1 #10031 : Length 116mm

Wide Finger 1 #10041 : Length 116mm

Narrow Finger 2 #10032 : Length 111mm

Wide Finger 2 #10042 : Length 111mm

Narrow Finger 3 #10033 : Length 105mm

Wide Finger 3 #10043 : Length 105mm

Narrow Finger 4 #10034 : Length 97 mm.

*Wide finger = long straps, Narrow finger = short straps

CUSTOMIZATION HIGHLIGHTS

- Choose the right length for the finger.
- If there is a decrease in sensation, be careful during the customization and keep insulation in the other fingers.
- The angle between the long section and the short section should be 40–50 degrees.
- During the customization, pay attention to keep the strap slots open.

HIGHLIGHTS



SUPPORTS: PIP and DIP of fingers

DESCRIPTION: STATIC FINGER ORTHOSIS, PROXIMAL INTERPHALANGEAL (PIP) /DISTAL INTERPHALANGEAL (DIP), NON-TORSION JOINT/SPRING, EXTENSION/ FLEXION.

Gentle and strong support to the finger in a variety of sizes.

Provides stabilization of the phalanx joints. Holds fingers in a straight or bent position, provides comfort. Static thermoplastic transparent splint.

INDICATIONS: Fractures, sprains, cuts, dislocations, PIP and DIP, Mallet Finger, drop finger, baseball finger, Trigger finger, arthritis

CONTRAINDICATIONS: Not suitable for proximal phalanges fractures. Do not apply directly on open wound.