

# REST SPLINT

## HIGHLIGHTS AND INDICATIONS

Child #10002, Teen # 10003, Adult #10005

**SIZES:** Child length 261mm, Teen length 315mm, Adult length 372mm

**SUPPORTS:** Forearm, Wrist, Palm, Fingers, Thumb

**DESCRIPTION:** STATIC WRIST HAND ORTHOSIS, WRIST EXTENSION CONTROL COCK-UP.

Full length customizable splint, from forearm and up to end of fingers. Provides full support, protection and rest to wrist and fingers in neutral position. Can help to prevent deformations of hand and wrist joints. Can be worn overnight and/or during the day. Static thermoplastic transparent splint.

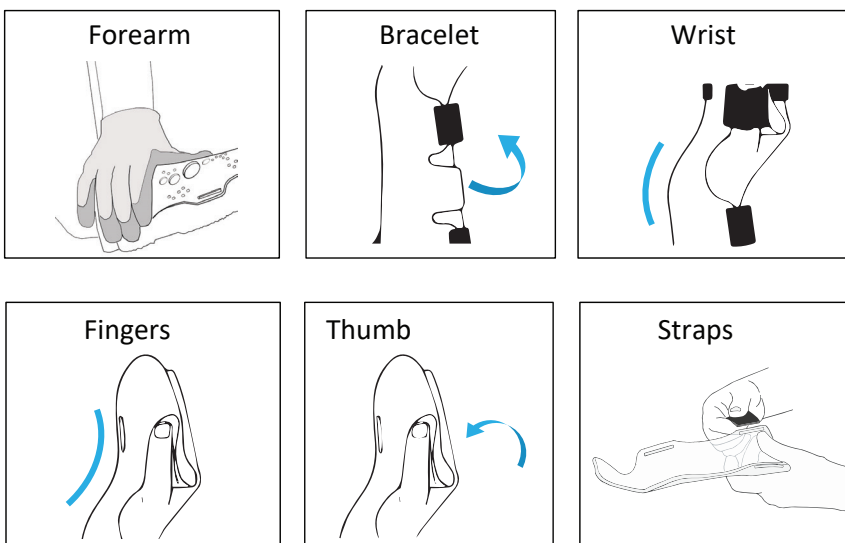
**INDICATIONS:** Paralyzed hand and wrist, wrist drop, spastic hand after relief treatment, post-surgery, preventing loss of motion after acute trauma such as burns, pain relief, preservation of ROM.

**CONTRAINDICATIONS:** Not for acute phase of most wrist fractures. Do not apply directly on open wound.

### CUSTOMIZATION HIGHLIGHTS

- This splint allows for complete fixation to all MP and IP joints of hand and wrist.
- Working Steps: First bend forearm area, then wrist area, and finally fingers and thumb areas.
- If necessary, it is possible to adjust on yourself first.
- Thumb area is thinner, it is recommended to bend it slightly around thumb.
- The support in middle part of forearm (in sizes Teen, Adult) purpose is to allow splint to be worn independently whilst using one hand.
- When bending splint's thumb area make sure that angle between thumb and palm is not too large and that no pressure occurs when wearing splint.
- At end of customization, make sure that hand is well rested in an optimal position and that patient has maximal comfort without pressure points.

### STEPS



### HIGHLIGHTS

